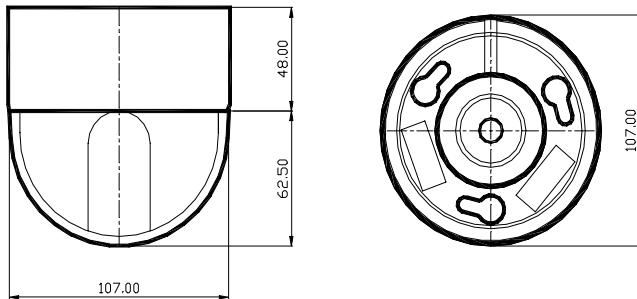


Product specification

Power input	DC 12V, 500mA
Application environment	Indoor
Operation of degree	Pan – 320° Maximum Tilt – 90° Maximum
Operation speed of PT	Pan – 35°/sec Tilt – 90°/sec
Loading capacity weight	50g Maximum
Housing material	High impact resistance plastic
Weight	About 400g



Pan & Tilt combination

Color Dome Camera

YPT-100 User's guide

“RS-485 BY PELCO-D PROTOCOL”



- Read this user's guide carefully before any installation for safety and operation of product.
- Features and specifications are subject to change without any notice for functional improvement

Summary & Special features

1. Summary

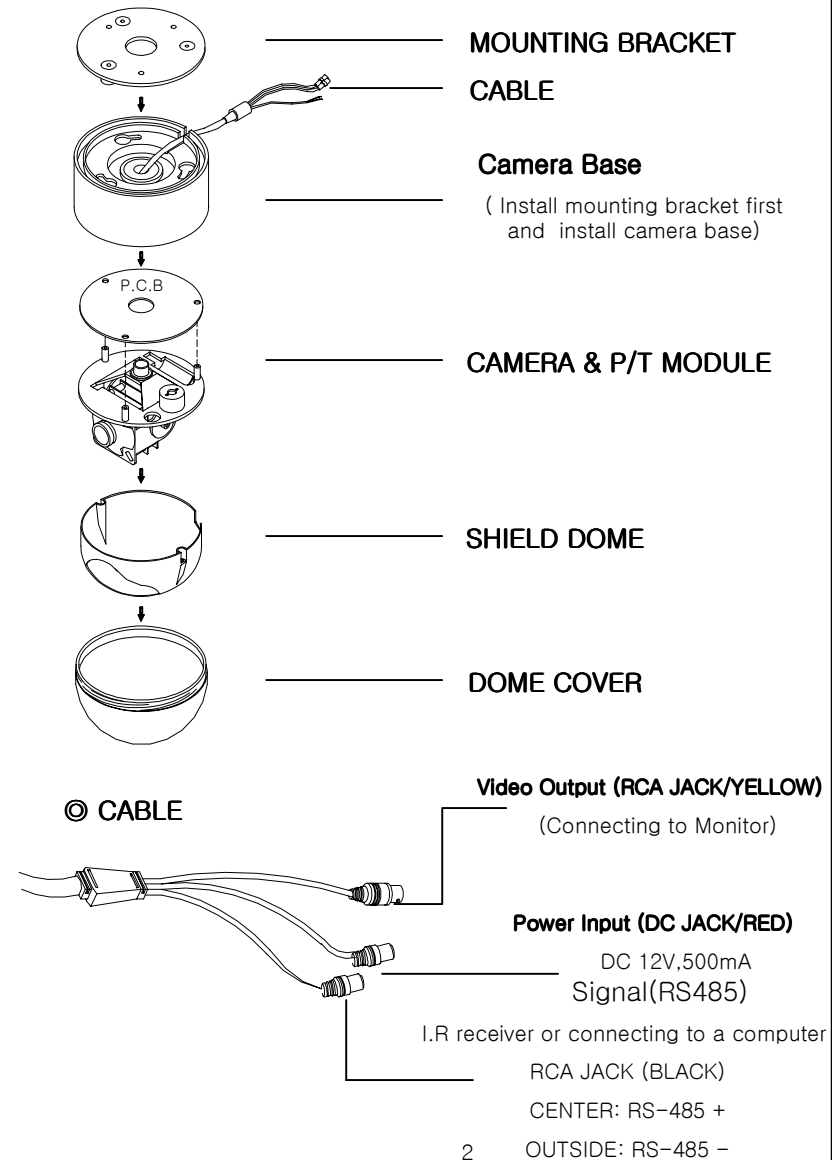
The observation direction of YPT-100 is turned freely left ,right ,up and down.

YPT-100 can watch efficiently with function of Digital X3 Zoom and light weight, small size.(OPTIONAL)

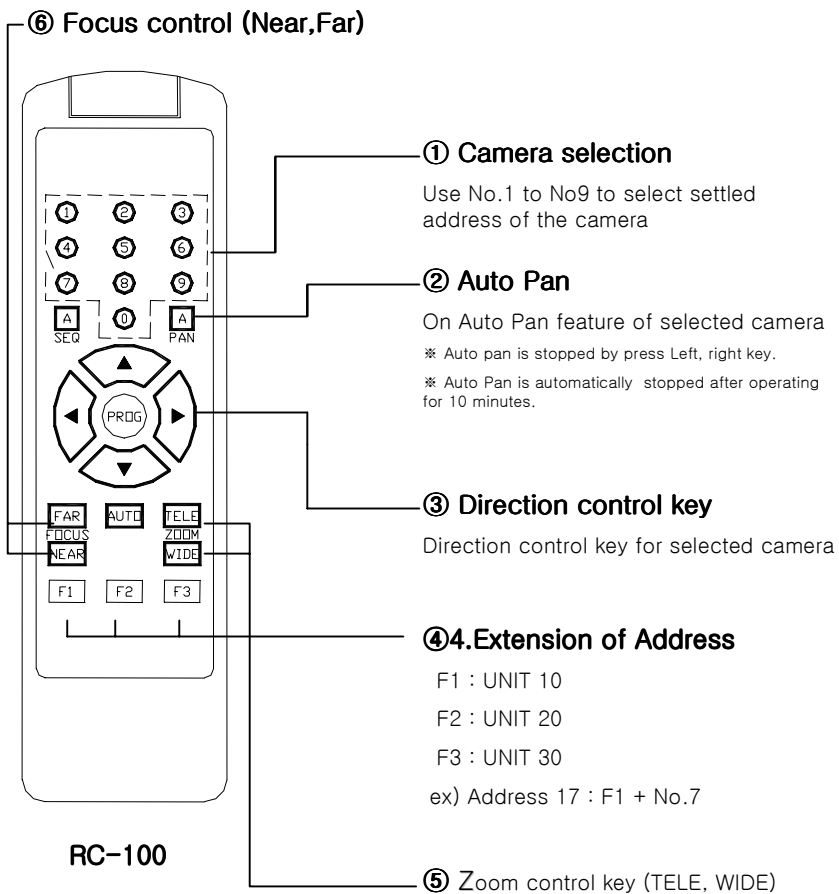
2. Special features

- 1) Small size and Hi-tech appearance.
- 2) Maximum 50°/sec of speedy rotation. (PAN)
- 3) Function of AUTO PAN that has 16-step of variable rotation angle is automatically stopped after operating for 10minues.
- 4) Anti-impact cover (POLY CABONATE).
- 5) Digital × 3 ZOOM (OPTIONAL)
- 6) Convenient One-Touch Mount Bracket
- 7) Control operation with RS-485 telecommunication protocol.
- 8) Connectable various DVR
- 9) Easy control with using remote controller

Part name and feature 1



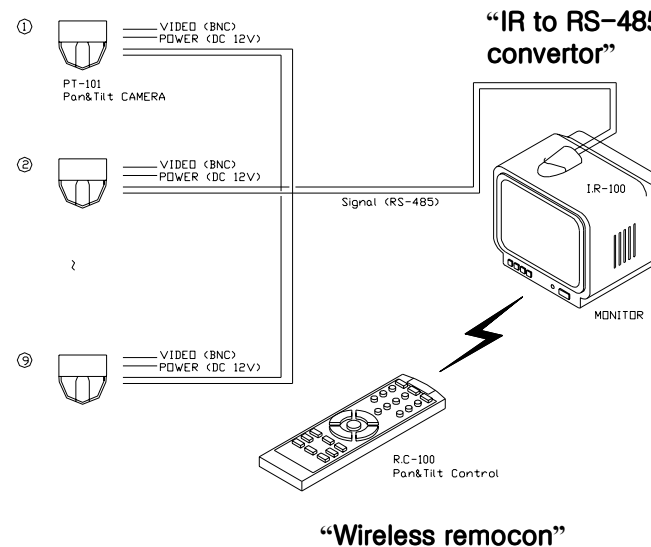
Remote controller operation



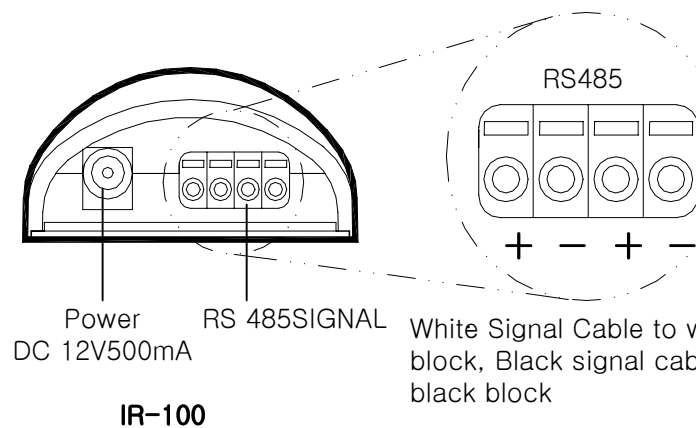
1. Select ID No to match with desired camera's No. by press ① and push to program key

2. Working test by ③ ⑤ ⑥

Cable connection



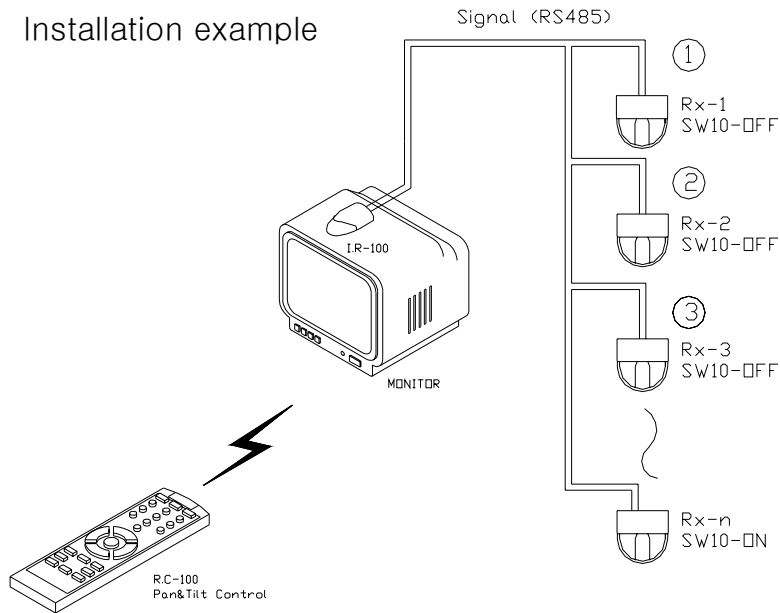
“RS-485 BY PELCO-D PROTOCOL”



DIP S/W Establishment

- SW 1 to SW 8 is S/W to set up the address.
- SW 9 determine the beginning point of this model when it is reset and power supplied.
- SW10 is S/W to adjust impedance of control cable.
Please turn on the last Rx of S/W, as below picture.

Installation example



The last grade of camera SW No. 10 must be turned on.

DIP S/W

※S/W No.9 is option.

※ The last grade of Rx in S/W No.10 must be turned on.

Address	SW1	SW2	SW3	SW4	SW5	SW6	SW7	SW8
1	ON	OFF	OFF	OFF	OFF	OFF	OFF	OFF
2	OFF	ON	OFF	OFF	OFF	OFF	OFF	OFF
3	ON	ON	OFF	OFF	OFF	OFF	OFF	OFF
4	OFF	OFF	ON	OFF	OFF	OFF	OFF	OFF
5	ON	OFF	ON	OFF	OFF	OFF	OFF	OFF
6	OFF	ON	ON	OFF	OFF	OFF	OFF	OFF
7	ON	ON	ON	OFF	OFF	OFF	OFF	OFF
8	OFF	OFF	OFF	ON	OFF	OFF	OFF	OFF
9	ON	OFF	OFF	ON	OFF	OFF	OFF	OFF
10	OFF	ON	OFF	ON	OFF	OFF	OFF	OFF
11	ON	ON	OFF	ON	OFF	OFF	OFF	OFF
12	OFF	OFF	ON	ON	OFF	OFF	OFF	OFF
13	ON	OFF	ON	ON	OFF	OFF	OFF	OFF
14	OFF	ON	ON	ON	OFF	OFF	OFF	OFF
15	ON	ON	ON	ON	OFF	OFF	OFF	OFF
16	OFF	OFF	OFF	OFF	ON	OFF	OFF	OFF
17	ON	OFF	OFF	OFF	ON	OFF	OFF	OFF
18	OFF	ON	OFF	OFF	ON	OFF	OFF	OFF
19	ON	ON	OFF	OFF	ON	OFF	OFF	OFF
20	OFF	OFF	ON	OFF	ON	OFF	OFF	OFF
21	ON	OFF	ON	OFF	ON	OFF	OFF	OFF
22	OFF	ON	ON	OFF	ON	OFF	OFF	OFF
23	ON	ON	ON	OFF	ON	OFF	OFF	OFF
24	OFF	OFF	OFF	ON	ON	OFF	OFF	OFF
25	ON	OFF	OFF	ON	ON	OFF	OFF	OFF
26	OFF	ON	OFF	ON	ON	OFF	OFF	OFF
27	ON	ON	OFF	ON	ON	OFF	OFF	OFF
28	OFF	OFF	ON	ON	ON	OFF	OFF	OFF
29	ON	OFF	ON	ON	ON	OFF	OFF	OFF
30	OFF	ON	ON	ON	ON	OFF	OFF	OFF
31	ON	ON	ON	ON	ON	OFF	OFF	OFF
32	OFF	OFF	OFF	OFF	OFF	ON	OFF	OFF
33	ON	OFF	OFF	OFF	OFF	ON	OFF	OFF
34	OFF	ON	OFF	OFF	OFF	ON	OFF	OFF
35	ON	ON	OFF	OFF	OFF	ON	OFF	OFF
36	OFF	OFF	ON	OFF	OFF	ON	OFF	OFF
37	ON	OFF	ON	OFF	OFF	ON	OFF	OFF
38	OFF	ON	ON	OFF	OFF	ON	OFF	OFF
39	ON	ON	ON	OFF	OFF	ON	OFF	OFF